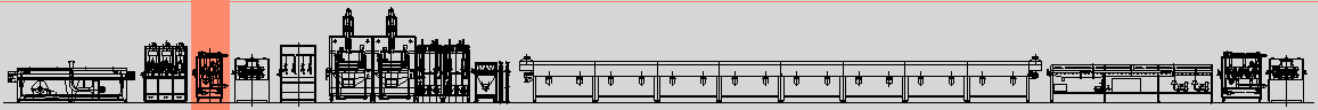


PROFILES FLOCKING LINE



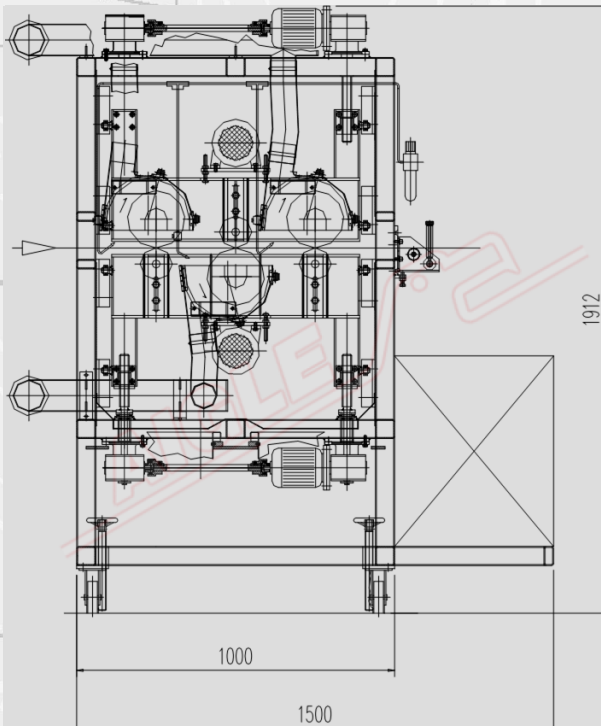
Brushing Unit - mod. SZ3

The **Brushing Unit mod. SZ3** is used to clean profiles from sanding residue before glue application, or from flock residue after vulcanization.

It consists of:

- A structure on four wheels, allowing easy movability of the machine
- Three brushes with natural bristles rotating on two rows, opposed to idle cylinders:
- two for the upper profile side
- one for the lower profile side

Both rows are independently motorized and equipped with motorized pressure adjustment. For proper dust recovery, each brush has a suction hood which is connected to a suction unit that is sealed with transparent access doors to avoid dust dispersion.



TECHNICAL DATA

Brush diameter	155 mm
Brush width	150 mm
Brush type	natural bristles
Brush motors	1+1 kW
Power supply	400 V/50 Hz/three-phase
Installed power	2,5 kW

Member of CISO Federation



CERTIFIED MANAGEMENT SYSTEM
ISO 9001 - ISO 14001



SUSTAINABLE MACHINERY CERTIFICATION



AIGLE